



A Marmon | Berkshire Hathaway Company

FLOW

FLOW Model designed for Faster Offload / Lighter Weight*

Patent Pending Design Features



**What We
Make Matters.®**

*in some product configurations

ktpacer.com

Enhanced Structural Integrity For Longer Equipment Life



A Marmon | Berkshire Hathaway Company

0.190 Bulkheads

Reduces trailer damage
when soft rollovers occur



Trussing on Discharge Auger

Designed to Endure



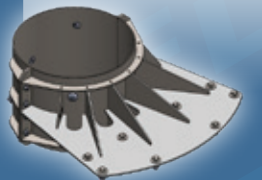
Finite Element Analysis Transition Rings

Designed to endure
Not a constraint for offload speed



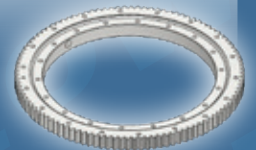
Steel Swivel Band

Designed to Endure



Slew Bearing

High Load Capacity
Extended Service Life
Improved Controllability



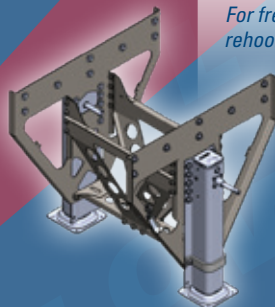
Proprietary Sill & Header Extrusions

Distributes the forces applied
throughout the trailer



Heavy Duty Landing Gear Option*

For frequent unhooking and
rehooking application, up to
every load



Severe Duty Fender Option*

Bolt-on front and rear fenders provide
protection from road debris. Bolt-on
design for quick replacements
when needed and rear fenders are
symmetrical and can be used on
either side of trailer.



High Strength Material Subframe

Designed to Endure
Galvanized



Impact Tested Rear Impact Guard

Meets National Highway Traffic
Safety Administration Regulation:
NHTSA-2022-0053 (Federal Motor
Vehicle Safety Standard – FMVSS
No. 223 – 224)



Extended Sill

Enables various axle positions for
bridge law & payload requirements
Designed to endure
Improved Feed Flow



Increased Uptime & Lower Maintenance Cost



A Marmon | Berkshire Hathaway Company




Galvanized Auger Tubes option*

Improved protection for various climate conditions
Crack and Chip resistant



Higher Capacity Motors*

Selected so motors operate within their specified range for longer motor life and increased hydraulic system efficiency



Wiring with Terminal Blocks

Wiring quick connect & disconnect for ease of maintenance and troubleshooting




Owner's Manual

Provided with each unit for operator & maintenance use




Valve Box

Reduced Vibration
Improved protection from tire blowout
Operator Ergonomics (Line of Sight)



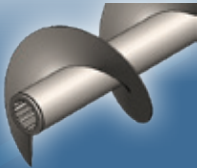
Bluetooth Module

Log unit run time hours to support maintenance intervals
Remote diagnostics & troubleshooting




3 inch Auger Shaft

Reduced flexing of the shaft and increases structural integrity



Splined Couplers

Improved load transfer w/ multiple points of contact vs. conventional bolted joint




Patent Pending Hanger Bearings

Improved Material Flow
Multiple Points of Contact for improved shaft support



Transition Plate

Finite element analysis (FEA) engineering designed to endure



Single Drive NSL System
(coming soon)

Only one motor required to operate the rear floor, reducing the number of parts that require maintenance



Rechargeable Remote Option*

Rechargeable
6 or 12 Function
Enhanced Operator Efficiency (Line of Sight)



Low Center of Gravity

Improved Stability
Reduces Rollover Potential



Feed Trailer Gate Configurations

Precision-Engineered for Efficient Flow Control

Feed Trailer

Body Profiles & Dimensions



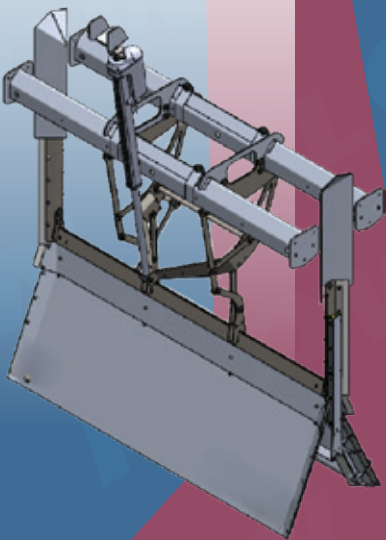
A Marmon | Berkshire Hathaway Company

Hinge Gate (Patented)

- **Clearance:** 13.5" from bottom of gate to top of floor auger
- **Feed Flow:** Full exposure to floor auger
- *Gate panels collapse and raise vertically to aid in breaking up bridged feed*

Ideal For:

- ✓ Dairy feed
- ✓ High-fiber or sticky feeds containing:
 - DDGs
 - Molasses
 - Cotton hulls

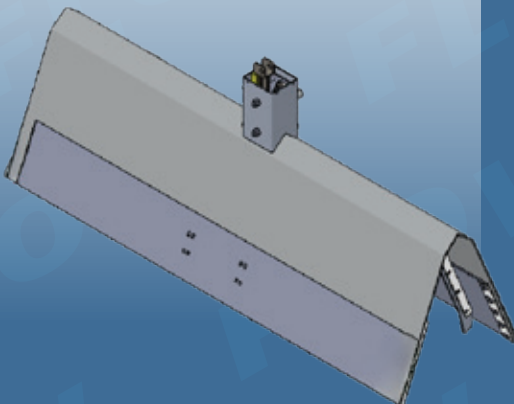


Inverted V Gate

- **Clearance:** 7.25" from bottom of gate to top of floor auger (fully open)
- **Feed Flow:** Directs feed flow over roadside and curbside of floor auger

Ideal For:

- ✓ Pellets
- ✓ Mash
- ✓ Crumbles

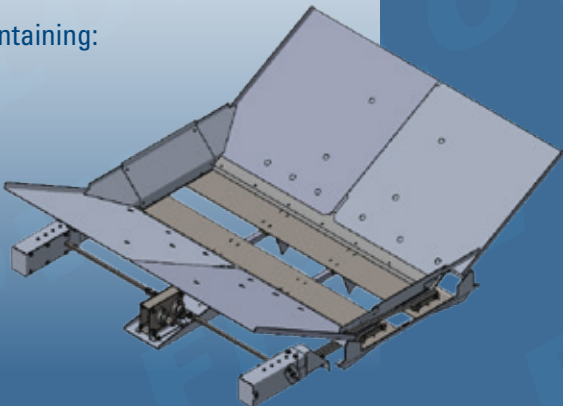


Side-to-Side Gate

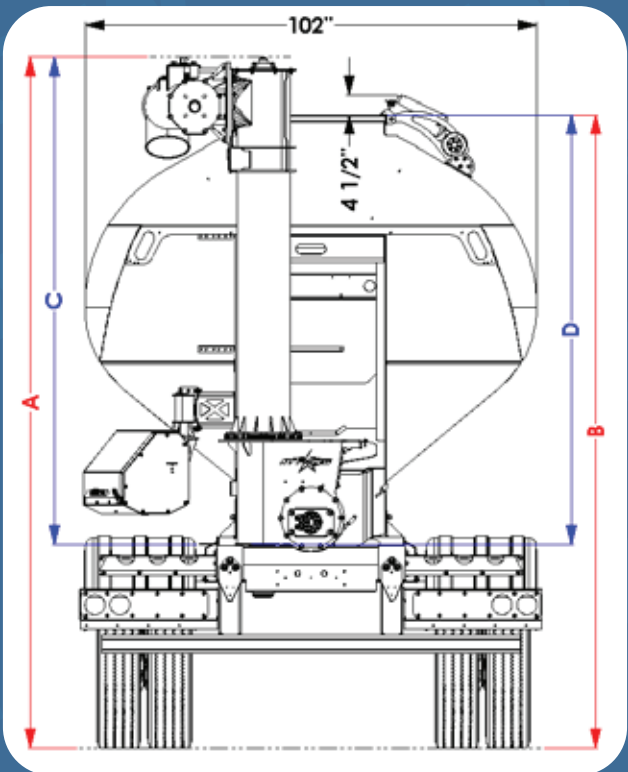
- **Opening Width (Fully Open):** 16" wide opening
- **Feed Flow:** Full exposure to floor auger

Ideal For:

- ✓ Dairy feed
- ✓ Blended rations containing:
 - Molasses
 - Cotton hulls
 - DDGs
 - Minerals



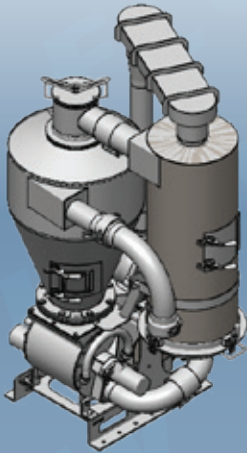
PROFILES & DIMENSIONS			TRAILER		BODY	
Body Profile	Tank Capacity	Discharge Type	A Overall Height	B Loadout Height	C Overall Height	D Loadout Height
L	39 cubic ft/ft	SV	148	135	102	89
		SLANT	140.5		94.5	
		HV	149		103	
ML	41.5 cubic ft/ft	SV	153.5	140	107.5	94
		SLANT	144		98	
		HV	153.5		107.5	
LW	43 cubic ft/ft	SV	156	143	110	97
		SLANT	147.5		101.5	
		HV	156.5		110.5	
HCL (Intl only)	43 cubic ft/ft	SV	159	145	113	99
		SLANT	149		103	
		HV	158.5		112.5	
WHCL	49.4 cubic ft/ft	SV	162	149	117	103
		SLANT	154		108	
		HV	160.5		114.5	
NSL	35cu ft/ft	SV	150.5	137.5	*Note: Dimensions listed above do NOT include the height of chassis frame rail. This will need to be applied to achieve overall height.	
	48.5cu ft/ft	HV	151			



Patented, Proprietary, & Engineered Solutions

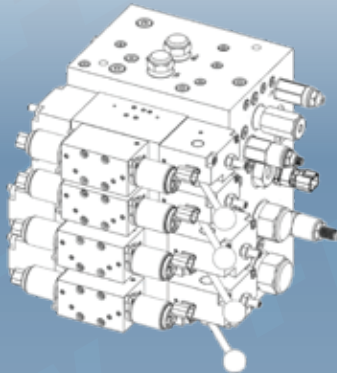
Proprietary Retrieval System

*Enhanced feed
recovery performance
No filter to clean or change*



Proprietary SF1 Valve

*With flow sequencing for smooth unload
performance including soft start and soft
stop operation, remote or manual control
capability, & canbus controls*



Engineered Wet Kits

*Designed with power transfer and
hydraulic cooling capacity to keep your
feed transportation equipment performing*



All call outs on this page are built from components made in America

Contact Us

OEM Sales Team

*Dedicated to serving your feed transportation needs,
pairing the best solutions for your application.*

Email sales@ktpacer.com
or visit ktpacer.com to find your
regional sales representative



Dedicated Technical Customer Support Team

Email parts@ktpacer.com
or call (319) 396 – 7336
to speak with our Technical Customer Support Team



Your Market Leader in Feed Transportation Solutions

Serving the majority of poultry, swine,
and beef producers in the U.S.

A Marmon | Berkshire Hathaway Company

5555 16th Ave SW, Cedar Rapids, IA 52404 | 319.396.7336 | 319.396.2462 (fax) | info@ktpacer.com

© 2024 KT PACER

Customized Solutions